

Arc flash Face shield HRC2 12cal/cm² Extra Chin - BSD

Arc flash PPE combines clothing and safety equipment to allow operators to be efficient and safe around Arc flash environments.

Suitable for working in HRC2 environments up to 12cal/cm².

Key Features:

- Hazard Risk Category: HRC2 12cal/cm²
- Additional transparent chin protection for greater peripheral vision
- Colour: Clear/Light Smoke Tint with blue accent
- Medium Impact (B) for high speed objects
- Universal Fitting system for most standard peaked hard hats
- Chin guard

Standards:

- AS4836:2011
- ASTM F2178
- ANSI/ISEA Z.87.1-2010
- DIN EN 166:2001
- DIN EN 170:2002
- E DIN 58118:2011
- DGUV GS-ET-29:2011

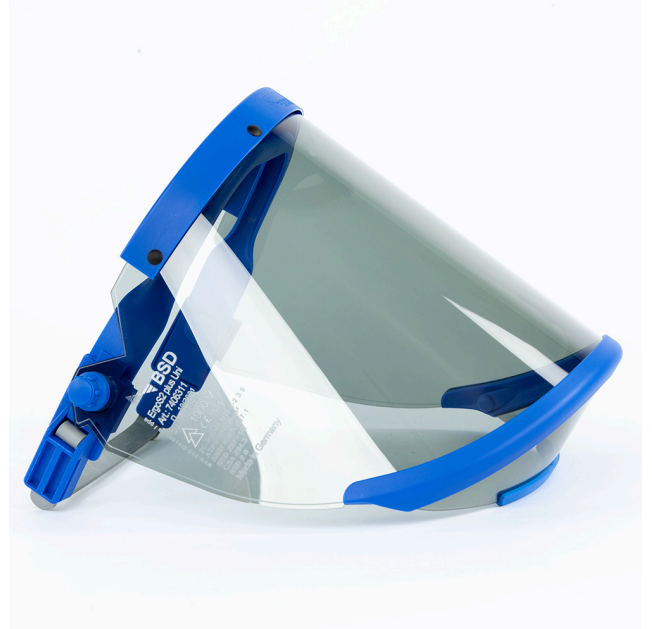
Options:

[1000V Rated Helmet to suit Arc Flash Face shield](#)

1000V Rated Helmet to connect the face shield to your head and provide Arc flash protection

[Double Layer Balaclava HRC2 12cal/cm²](#)

Additional head protection in Arc flash environments.



SKU/Part #
ARC-FS 2PLUS