



DAIRYWEAR PROTECTIVE CLOTHING



[shedlinedairywear.co.nz](http://shedlinedairywear.co.nz)

## SHEDLINE - Dairywear designed by Dairy Farmers

Originating in the early 1990's, the range of dairywear protective clothing was designed and developed by a NZ dairy farming family and has rapidly grown into the leading global supplier of Dairy Aprons and Milking Sleeves to New Zealand, Australia and other dairy markets around the world.



## CONTENTS

	Page
Lightweight Apron	4
Heavyweight Apron	5
Lightweight Apron with Pocket	6
'Armour' Safety Apron	7
Custom Branded Apron	8
Milking Sleeves	9
Sleeve Protectors	10



DAIRYWEAR PROTECTIVE CLOTHING

## Lightweight Apron

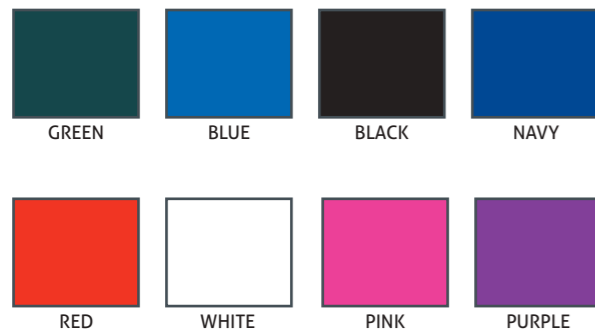
The **SHEDLINE** *Lightweight Apron* is manufactured using our own uniquely formulated PVC material, specifically developed to enhance the key qualities of the apron and durability in the demanding dairy shed environment.

### FEATURES:

- Comfortable webbing neck and waist straps with adjustable quick-release buckles
- Durable, strong brass eyelets
- Neck and waist straps double bartacked for extra strength
- Dual fabric layers folded and stitched at high stress points
- Full-length protection



### AVAILABLE IN A RANGE OF POPULAR COLOURS:



### SIZES:\*

- Standard
- Ladies
- Junior

\*Custom sizes also available on request

## Heavyweight Apron

The **SHEDLINE** *Heavyweight Apron* is manufactured from a premium PVC material of increased thickness to create a heavy-duty apron that is extra hard-wearing, tough and extremely durable.

### FEATURES:

- Comfortable webbing neck and waist straps with adjustable quick-release buckles
- Durable, strong brass eyelets
- Neck and waist straps double bartacked for extra strength
- Dual fabric layers folded and stitched at high stress points
- Full-length protection



### AVAILABLE IN A RANGE OF POPULAR COLOURS:



### SIZES:\*

- Standard
- Ladies
- Junior

\*Custom sizes also available on request

## Lightweight Apron with Pocket

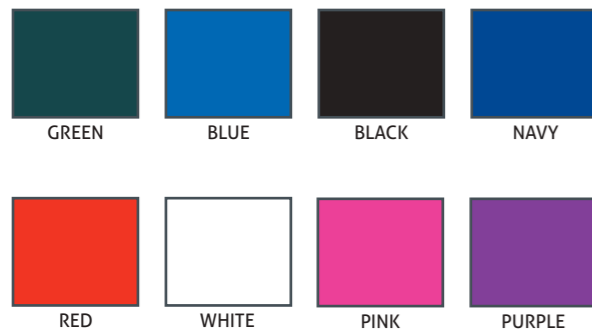
The **SHEDLINE** *Lightweight Apron with Pocket* incorporates all the quality elements of the standard Lightweight Apron but with the added feature of a useful front bib pocket, complete with a protective flap to keep the inside of the pocket clean and dry.

### FEATURES:

- Useful pocket with protective cover flap
- Comfortable webbing neck and waist straps with adjustable quick-release buckles
- Durable, strong brass eyelets
- Neck and waist straps double bartacked for extra strength
- Dual fabric layers folded and stitched at high stress points
- Full-length protection



### AVAILABLE IN A RANGE OF POPULAR COLOURS:



### SIZES:\*

- Standard

\*Custom sizes also available on request

## 'Armour' Safety Apron

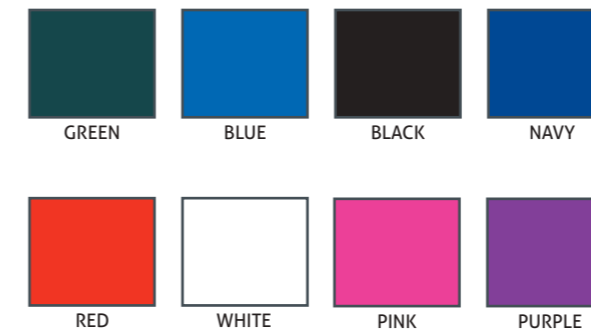
The **SHEDLINE** *'Armour' Safety Apron* features a rigid plastic safety shield, shaped to mould around the upper body and help protect the milker from cows kicking. The standard position of the safety shield is near the top of the apron to increase protection of the chest area but alternatively can be manufactured with the shield positioned lower down the apron to help protect the stomach area if preferred.

### FEATURES:

- Built-in safety shield for increased protection from kicking cows
- Comfortable webbing neck and waist straps with adjustable quick-release buckles
- Durable, strong brass eyelets
- Neck and waist straps double bartacked for extra strength
- Dual fabric layers folded and stitched at high stress points
- Full-length protection



### AVAILABLE IN A RANGE OF POPULAR COLOURS:



### SIZES:\*

- Standard

\*Custom sizes also available on request

## Custom Branding

Custom Branded Dairy Aprons are an extremely effective method of promoting your company / product / brand. This optional branding using high performance printing inks is included as part of the apron manufacturing process to ensure a professional standard of finish that is consistent with the overall premium quality of the apron.

### Why custom branded Shedline Dairy Aprons are such a GREAT marketing tool:

- Using a premium quality apron ensures long lasting brand exposure
- Branding on the apron is regularly and continuously exposed to key decision-making personnel on the farm and around the dairy shed
- An apron is a necessary commodity for a dairy farmer - guaranteed to be used

### PROMOTE YOUR...



## Milking Sleeves

The Milking Sleeves are made with a light weight breathable material that is waterproof and comfortable to wear. The modern design offers full-length arm protection and includes a unique rubber cuff for added comfort.

### FEATURES:

- Full-length arm protection
- Lightweight and comfortable to wear
- Rubber comfort cuff
- Connected with elastic shoulder strap to help prevent from slipping down the arm



### AVAILABLE IN ONE POPULAR COLOURS:



### SIZES:\*

- Small
- Medium
- Large
- Extra Large

\*Custom sizes also available on request



## Sleeve Protectors

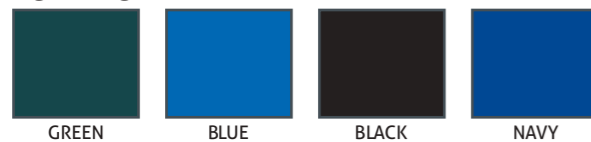
The *Sleeve Protectors* offer forearm protection and are both lightweight and comfortable to wear. The design allows unrestricted arm movement and being elasticized both ends helps to maintain clean, dry forearms.

### FEATURES:

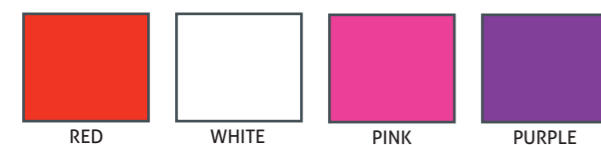
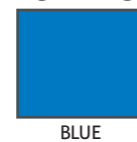


### AVAILABLE IN A RANGE OF POPULAR COLOURS:

#### Lightweight PVC



#### Lightweight Poly



#### Lightweight Breathable



### SIZES:\*

- Standard

\*Custom sizes also available on request

## SHEDLINE - Crafted in New Zealand

All Dairywear garments are manufactured in our own New Zealand facilities, ensuring the continuation of outstanding quality of workmanship and materials that has enabled the brand to become the No. 1 supplier of Dairy Aprons and Milking Sleeves to farmers in New Zealand, Australia and wider.



handcrafted in  
**New Zealand**

10 Ryan Place, PO Box 76128 Manukau 2014,  
New Zealand Phone: +64 (0)9 263 4566  
Email: [info@shedlinedairywear.co.nz](mailto:info@shedlinedairywear.co.nz)  
[jaedon.co.nz](http://jaedon.co.nz)

PHONE: 09 263 4566